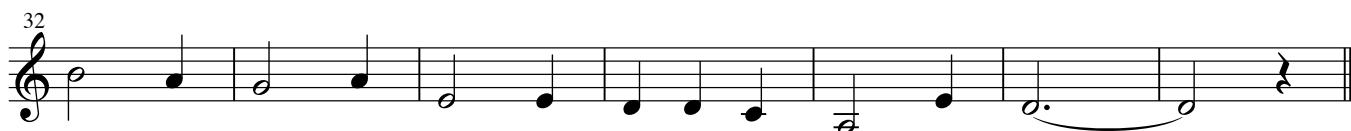
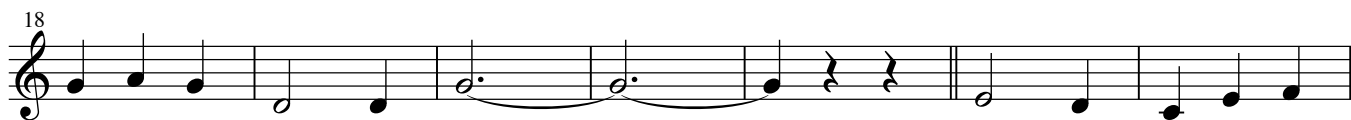


中途半端

♩=130~140

きりん



♩=100



Tempo I



64

64-69: Musical staff with notes and rests. A fermata is placed over the note at measure 68. The tempo marking *rit.* is written below the staff.

70

a tempo

70-75: Musical staff with notes and rests. A fermata is placed over the notes at measure 71. The tempo marking *a tempo* is written above the staff.

76

76-81: Musical staff with notes and rests.

82

82-87: Musical staff with notes and rests.

88

88-93: Musical staff with notes and rests.

94

Slowly (♩=105)

94-99: Musical staff with notes and rests. A fermata is placed over the notes at measure 95. The tempo marking *rit.* is written below the staff.

101

101-106: Musical staff with notes and rests.

107

107-112: Musical staff with notes and rests.

112

112-117: Musical staff with notes and rests.